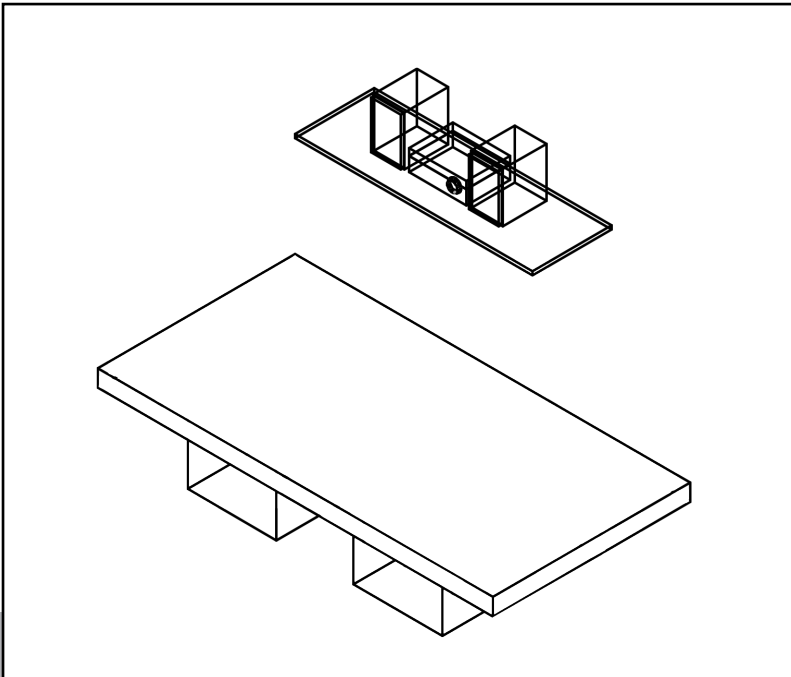




Life Changing Sensory Solutions For All

snoezelen®

INSTRUCTION MANUAL



VIBRATING FLOOR

14925

01.

CONTENTS

CONTENTS

ABOUT THE PRODUCT	4
Product Description.....	5
User Benefits	5
Product Compatibility	5
TECHNICAL SPECIFICATION	6
Included Parts and Materials.....	7
Technical Specification	7
SAFETY AND CARE.....	8
Product Safety and Care Instructions	9
ASSEMBLY & INSTALLATION GUIDE	10
Product Assembly Guide/Installation.....	11
USER GUIDE	14

02.

ABOUT THE PRODUCT

Product Description

This cushioned wooden floor vibrates automatically or in response to music or vocal stimuli. It is particularly suitable for those with mild or total sight/hearing loss as it provides valuable tactile stimulation. Also used for those with autism. Provides three methods of vibratory stimulation:

- Built in oscillator to vary frequency and extent of vibrations.
- Musical stimulation.
- Amplifier and leads supplied for ease of connection to any music centre or radio. Used with the microphone provided it can help to stimulate vocalisation. Vinyl - please specify colour required when ordering.

User Benefits

- Stimulates touch with the vibration properties.
- Stimulates auditory (sound) with the speaker system.

Product Compatibility

20551 – Microphone

21986 – Hi-Fi Audio System with Bluetooth®

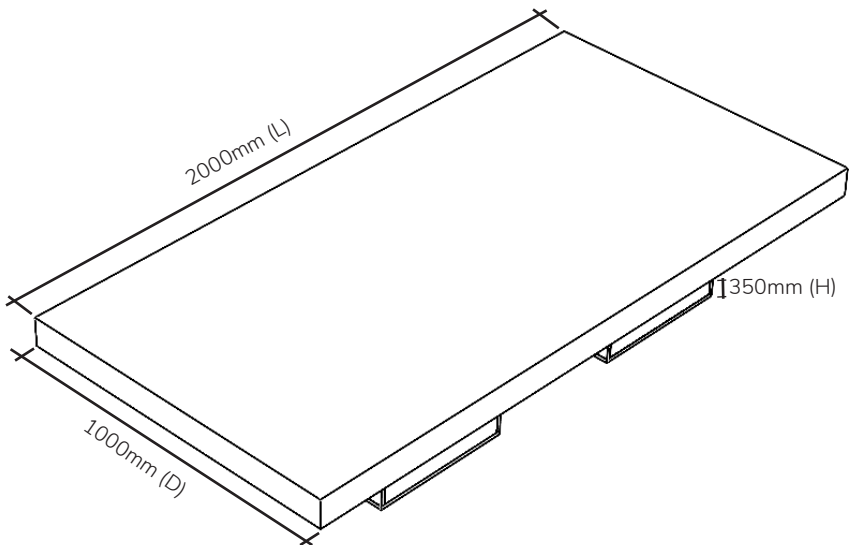
TECHNICAL SPECIFICATION

03.

Included Parts & Materials

- Amplifier: code 22956
- Fuses: 10 amp
- Oscillator (Control Box): T100mA

Technical Specification

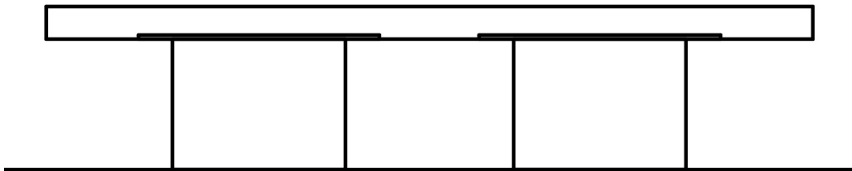
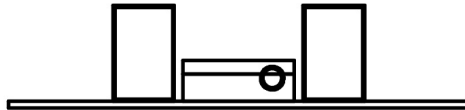


04.

SAFETY AND CARE

Product Safety and Care Instructions

- Always supervise the use of this product.
- For use indoors in a dry environment.
- Switch off components individually before unplugging from the mains.
- First, make sure all the controls are set to their lowest settings. Then switch the amplifier off BEFORE unplugging. Failure to do so may blow the fuses.
- Do not allow the Vibrating Floor to become wet.
- Do not strike the Vibrating Floor – use it with appropriate care.



ASSEMBLY & INSTALLATION GUIDE

05.

Product Assembly Guide/Installation

1. Choose a safe and suitably location for your Vibrating Floor. This product requires two wall sockets – one for your music system and another for the Oscillator.
2. Connect the two leads with the two mono jack plugs from the speaker box under the Floor to the 6.3mm SPEAKER OUTPUT sockets (LEFT and RIGHT) at the back of the Amplifier.

The Vibrating Floor can be operated using:

- Your music system
- Your music system and the microphone
- The microphone
- The oscillator

To use the Oscillator

Please note: No music can be played when the Oscillator is in use. The Oscillator uses frequency to create vibration, not music. There will be some noise when the Oscillator is in use as the speaker is still in operation, but not music. It is not possible to create vibration using the floor silently.

3. Connect the Oscillator into the mains (240V).
4. Connect the kettle lead from the Oscillator into the back of the Amplifier. The socket on the Amplifier is on the right, just above the ON/OFF switch.



5. Connect the black lead that has a pair of RCA (phono) connectors on each end between the Oscillator and the Amplifier. Connect one end of this lead to the Oscillator. This end is colour co-ordinated i.e. black to black and red to red. The other end of the RCA lead connects to the Amplifier. Connect the two leads with the two mono jack plugs from the speaker box under the Floor to the 6.3mm SPEAKER OUTPUT sockets (LEFT and RIGHT) at the back of the Amplifier.



6. Switch the Oscillator on at the front (this is either a green or red switch - the colour is for identification and has no other significance).



7. Switch the Amplifier on at the back.
8. The VOLUME control on the Amplifier is for adjusting the volume. The dial on the front of the Oscillator increases the frequency.
9. Use the Remote Box (labelled 'Frequency') to override the dial on the front of the Oscillator. The remote box is remote in that it can be used away from the Oscillator, but it is wired, not wireless. Connect the Remote Box to the socket labelled 'REMOTE' on the Oscillator. Use of the remote box* allows more able clients to operate the floor and lie on it at the same time. For less able clients, the carer can control the Oscillator. The nearer the dial is turned to 'MAX', the faster the speaker vibrates and the more intense the vibration.



To use a music system

10. Switch off the Oscillator. Switch off the Amplifier. Connect your music device to the amplifier using the appropriate sockets at the back of the amplifier:
 - Use the AUX 2 input phono sockets (red and white sockets) when using a cable connected to the microphone socket of your music system. Set the dial to AUX 2 IN.

- If using a phone without Bluetooth®, an iPod etc., connect a lead with a 3.5mm jack plug to the 3.5mm AUX 1 input socket on the front of the Amplifier, making sure that you adjust the large dial on the right hand side of the front of the Amplifier to AUX 1. A lead is not included by Rompa® – use a lead included with your own device.
 - Adjust the large dial on the right hand side of the front of the Amplifier to Bluetooth® if using a Bluetooth® device.
11. Connect the two leads with the two mono jack plugs from the speaker box under the Floor to the 6.3mm SPEAKER OUTPUT sockets (LEFT and RIGHT) at the back of the Amplifier.



12. Switch the Amplifier on at the back (a light at the front of the unit indicates that it is switched on).
13. Connect the stereo to the mains and switch the stereo on to activate the vibrations.
14. Use the 'VOLUME' control on the Amplifier to adjust the volume.
15. Experiment with the BASS and TREBLE controls to adjust the vibration effect.

To use the microphone

The microphone may be used on its own to create vibrations from vocalisation/speaking. It may also be used at the same time as music is played through your music system. That is to say that clients who are able to do so, may sing along to their preferred music, i.e. karaoke. There is provision to use one microphone only.

16. Switch the Amplifier off at the back (a light at the front of the unit indicates that it is switched on – this will go out when switched OFF).
17. Plug in the microphone to the MIC INPUT socket at the back of the amplifier.
18. Switch the Amplifier on at the back.
19. Switch the microphone on (small sliding switch on the handle).
20. Speak into the microphone to activate the vibration.
21. 21. Adjust the controls to control the vibration.

USER GUIDE

06.

User Guide

The Vibrating Floor does not work

- In the event of product failure check the connections (as detailed in 'Installation' above).
- If product still fails to operate, check the fuses. These are located in the UK plug of the Amplifier and below the ON/OFF switch on the Oscillator. Switch off and unplug before checking.

Constant noise

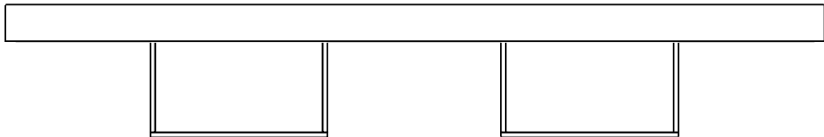
- When the oscillator is in use there is a noise produced associated with the vibrations. This is unavoidable as vibrations are produced through the speakers. If noise is still present in stereo mode, the oscillator may have been left on at the same time. Avoid this by removing the lead with paired RCA connectors on the end that connect the oscillator and the amplifier.

No noise

- Make sure that the amplifier has not been turned right down to the minimum setting – turn up as required.

High pitch squealing noise

- Make sure the BASS control is not set to the maximum – turn this down.



snoezelen[®]



Life Changing Sensory Solutions For All

**Rompa[®] Limited, Goyt Side Road,
Chesterfield, S40 2PH**

customer.service@rompa.com

www.rompa.com

14925_140425