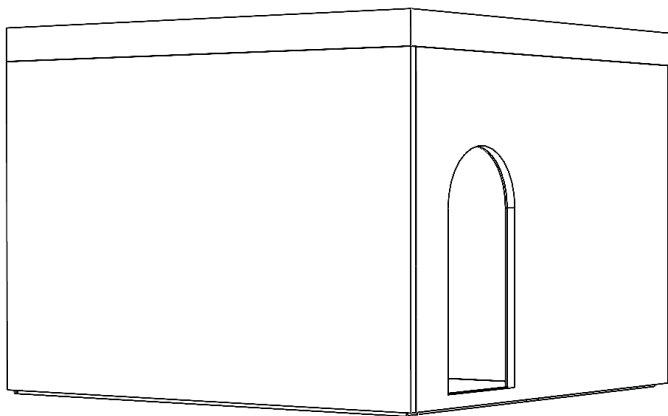




Life Changing Sensory Solutions For All

**snoezelen**®

# INSTRUCTION MANUAL



## ILLUMINATED CABIN

**19029**

# 01.

**CONTENTS**

# CONTENTS

<b>ABOUT THE PRODUCT .....</b>	<b>4</b>
Product Description .....	5
User Benefits .....	5
<b>TECHNICAL SPECIFICATION .....</b>	<b>6</b>
Included Parts.....	7
Technical Specification .....	7
<b>SAFETY AND CARE.....</b>	<b>8</b>
Product Safety and Care Instructions .....	9
<b>ASSEMBLY &amp; INSTALLATION GUIDE</b>	<b>12</b>
Product Assembly Guide/Installation.....	13
<b>USER GUIDE .....</b>	<b>14</b>
User Guide.....	15
<b>NOTES.....</b>	<b>16</b>

02.

**ABOUT THE PRODUCT**

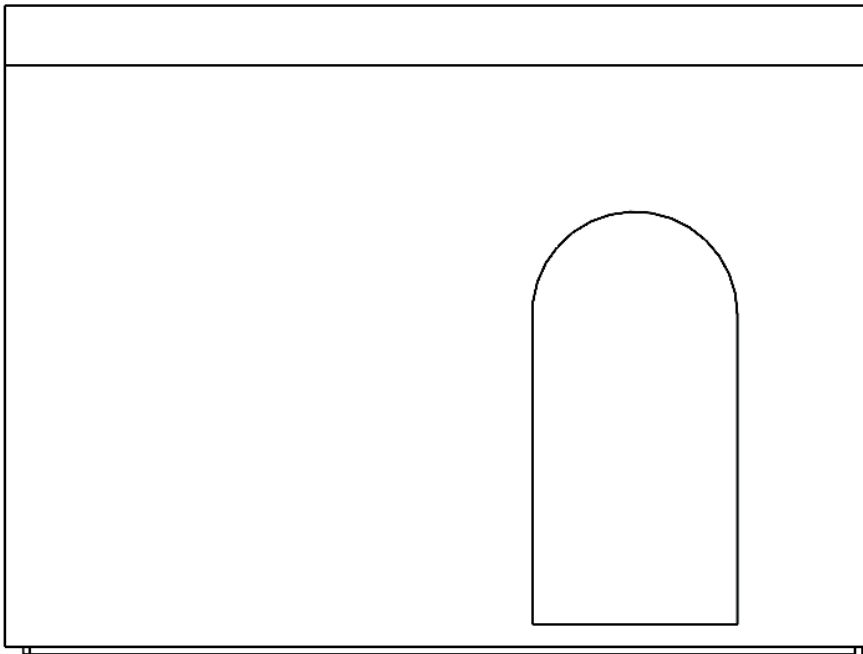
## Product Description

A cosy cabin featuring cushioned outer wooden walls and roof for a soft, safe space. The interior walls and ceiling are white and unpadded, creating a bright, reflective environment.

The cabins are supplied in two pieces and are designed for versatility: doorways can be positioned to meet your requirements. Includes a cushioned floor for extra comfort and safety.

## User Benefits

The Illuminated Cabin stimulates the senses, providing a rich sensory experience while creating an enclosed, personal, and private space for the user. This design enhances comfort and security, making it an ideal environment for relaxation and exploration.



# TECHNICAL SPECIFICATION

03.

## Included Parts

### Adapter:

Input: 100-240V~, 50Hz – 60Hz 0.3A

Output: 12V, 1A

CE and UL approved (conforms to FCC/EN 55022, Class B)

Fuse: internally limited to 1A LED

Wood

Foam

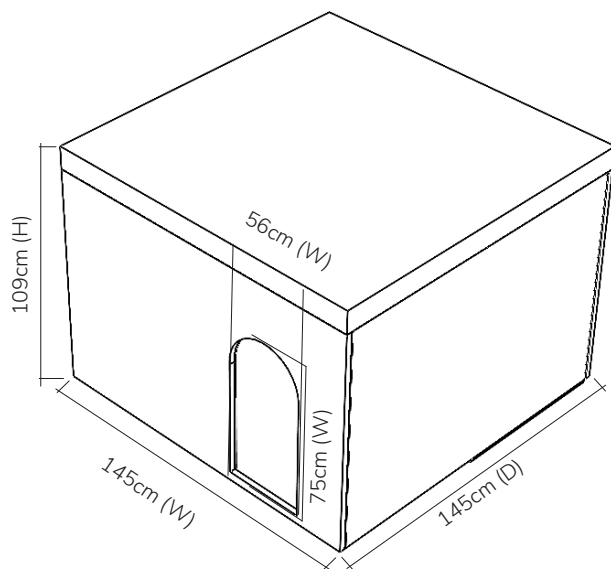
### Lamps:

12V DC MR16 White LED Cluster

Power: 1.5W

Life: 50,000 hours

## Technical Specification



04.

**SAFETY AND CARE**



# Product Safety and Care Instructions

## **Safety :**

### **ALWAYS SUPERVISE THE USE OF THIS PRODUCT**

- Remove all packaging and either store this in a safe place out of reach of clients or dispose of this responsibly. Plastic bags and wrapping can be hazardous to children and vulnerable people.
- Do not place near sources of heat or fire that may damage the surface (radiators, fires, underfloor heating, hot central heating pipes etc.)
- Some of our products contain zips for manufacturing purposes only. Do not attempt to open these or to access the interior part of these products. Never allow children or vulnerable people to access the interior part of this product.
- Use indoors, in dry environments.
- Use on a flat, stable surface, capable of holding the product's weight and that of the person/people using it.
- The walls contain wood and a foam filling. Do not attempt to access the interior part of the walls. Never allow children or vulnerable people to access the interior part of the walls. Should any seams or the zip become damaged, contact Rompa® immediately to arrange repair or replacement.
- Do not allow users to pull on the cable.

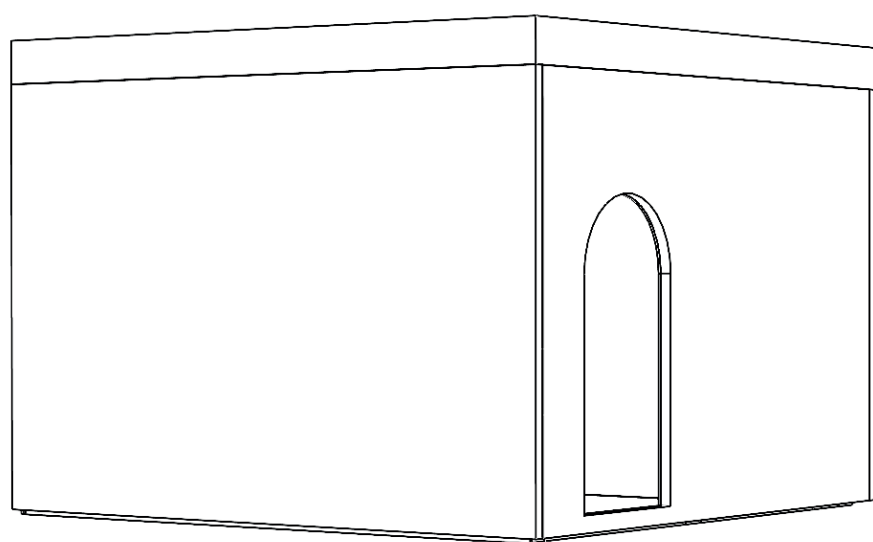
## **Care:**

- Organise a regular cleaning schedule.
- Vinyl will crack, tear and rub off if subjected to sharp objects or continual rubbing by hard objects. Remove shoes, and avoid buckles, zips or sharp/hard/pointed objects coming into contact with the surface.
- Check seams regularly to ensure that these are not worn or split and the interior filling cannot be accessed.
- Wipe off accidental marks/liquids at the time they occur or are noticed.
- From time to time, if possible, lift products up or move them to clean all surfaces and the floor underneath.
- Furniture, Soft Play and Cushioning are intended to provide comfort and relaxation. Avoid eating and drinking whilst using these products.

- Steam cleaning is not recommended.
- Direct contact with bright sunlight may affect material over time.
- Do not saturate the material with lots of water.

**PVC (Vinyl) Care:**

- Use a soft brush remove all loose dust/dirt.
- Clean with a mild detergent (such as Lux soap flakes in luke-warm solution) applied to a sponge or damp cloth. Do not use an abrasive cleaning pad.
- This may be sanitised using a weak solution of Milton fluid.
- Do not use excessive amounts of water and always ensure the PVC is dry after cleaning.
- Do not use boiling/very hot water, washing up liquid / aggressive detergent or solvent based cleaner as this will cause the coating to discolour and go hard.

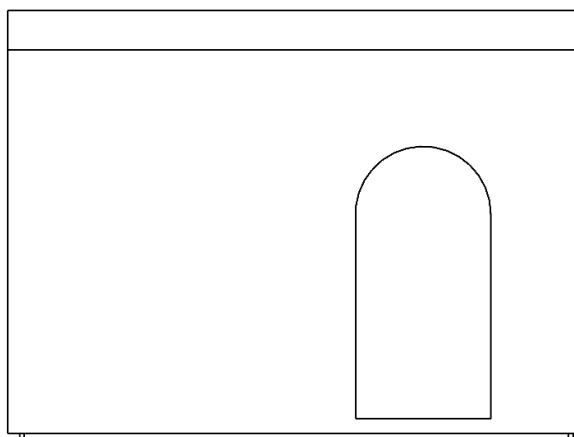
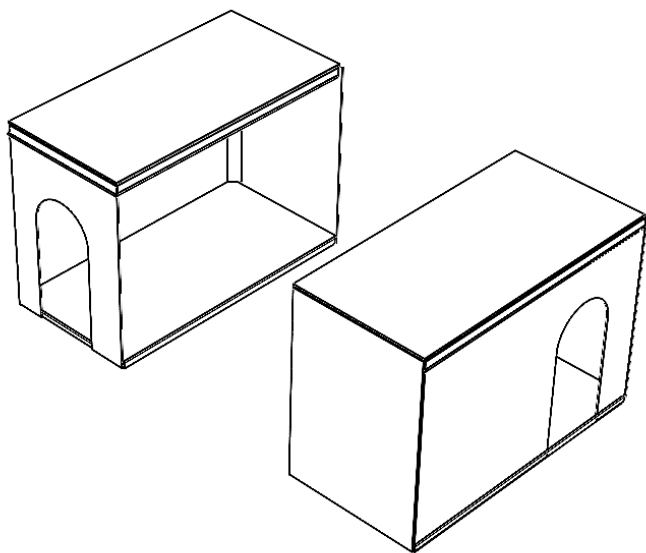


# **ASSEMBLY & INSTALLATION GUIDE**

05.

## Product Assembly Guide/Installation

- Join the two wall sections together and secure with the bolts provided.
- Plug in and switch on at the wall.



06.

**USER GUIDE**

# User Guide

## Placement:

Position the Cabin in a safe and appropriate location to ensure easy access and comfort for users.

## Product Selection:

Inside the Cabin, arrange suitable products that either stimulate or calm the user based on their needs and preferences.

## LED Lighting:

The Cabin is equipped with LED lamps designed to last approximately 50,000 hours. It's unlikely that these will need replacing during normal use.

## Replacing LEDs:

In the rare event that an LED needs to be changed:

- Unplug the Cabin from the power source.
- Carefully twist off the LED cover by turning it anti-clockwise (note that it may be tightly fitted).
- Pull out the used LED and replace it with a new LED of the same specifications.
- Push the new LED into place and securely replace the cover.

# NOTES

07.









**snoezelen**<sup>®</sup>



Life Changing Sensory Solutions For All



Scan QR code  
for more info

**Rompa<sup>®</sup> Limited, Goyt Side Road,  
Chesterfield, S40 2PH**

**[customer.service@rompa.com](mailto:customer.service@rompa.com)**

**[www.rompa.com](http://www.rompa.com)**