



HOME CINEMA PROJECTOR 19548

Please note:

Model may vary subject to availability

Detailed instructions from the manufacturer are included with this product

These instructions are only intended to give a brief overview of how this product functions, some of its features and how it should be installed

FEATURES

- True XGA, 1024 x 768 addressable pixels
- Single chip DarkChip²™ technology
- NTSC/NTSC4.43/PAL/PAL-M/PAL-N/SECAM and SDTV (480i/576i), EDTV (480p/576p), HDTV (720p/1080i) compatible
- Multi-Auto functions: Auto detection, Auto image and Auto saving the adjustments
- Full function remote control
- User friendly multilingual on screen display
- Advanced digital keystone correction and high quality full screen image re-scaling
- Built-in mono 2-Watt speaker
- SXGA+, SXGA compression and VGA, SVGA re-sizing
- Macintosh compatible

CONTENTS

Projector with lens cap

Wireless Remote Control

In UK, a BS approved power cable with moulded plug and 5Amp fuse (kettle lead)

VGA Cable (video cable with 15-pin D plugs)

INSTALLATION

Install

- in a safe, stable place using appropriate fixings that can easily support the weight of this product
- away from direct sunlight, heat sources
- away from dust, smoke, steam
- away from paper, cloth, rugs, carpet (the projector generates heat)
- in a horizontal position so that the tilt angle of the projector does not exceed 15 degrees – otherwise lamp life will be reduced drastically
- in an a place with adequate ventilation – do not allow the projector vents to be covered
- allowing at least 10cm (4") of space between your projector and a wall
- so that clients won't be looking into the lens
- away from any appliance generating a strong magnetic field

CONNECTIONS

At the back of the Projector are the following connections (sockets):

- AC power in socket (to connect IEC kettle lead)
- S-VIDEO IN Connector
- VIDEO IN Connector
- SERVICE PORT
- MONITOR OUT Connector
- AUDIO IN Jack

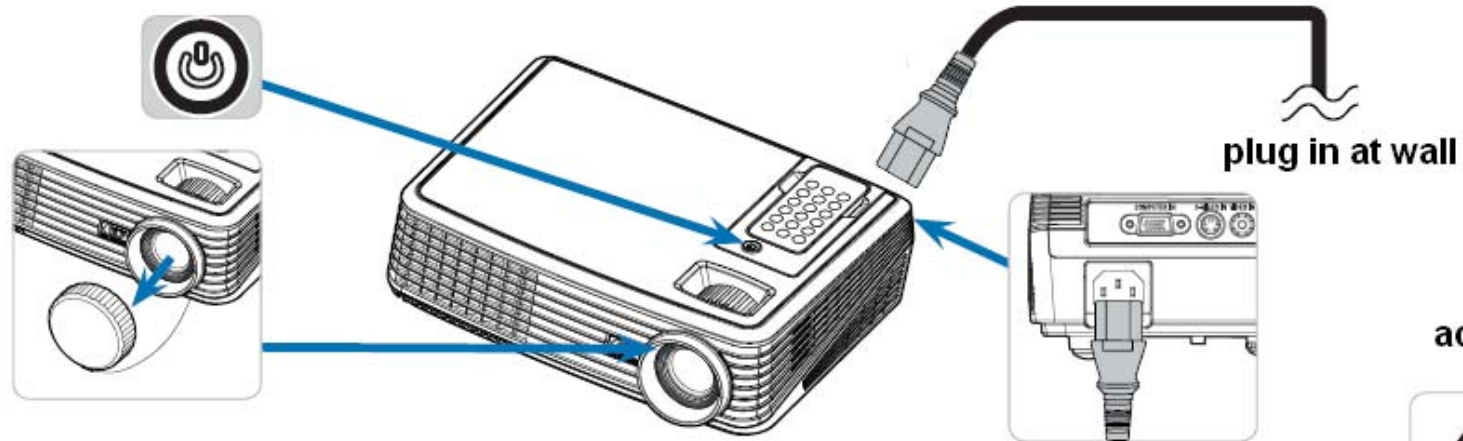
i.e. You can connect the following devices to this projector:

PC, lap top, video, monitor, DVD player ...

REMOTE CONTROL FUNCTIONS

(some of key features – there are more as detailed in manufacturer's manual)

- ON/OFF
- Select Picture Mode
- Choose Computer connector
- Freeze – pause the screen (and press again to resume)
- Keystone Correction – to adjust image if projector has been tilted
- Source – choose RGB, S-Video etc
- Magnify (zoom in and out)
- Volume



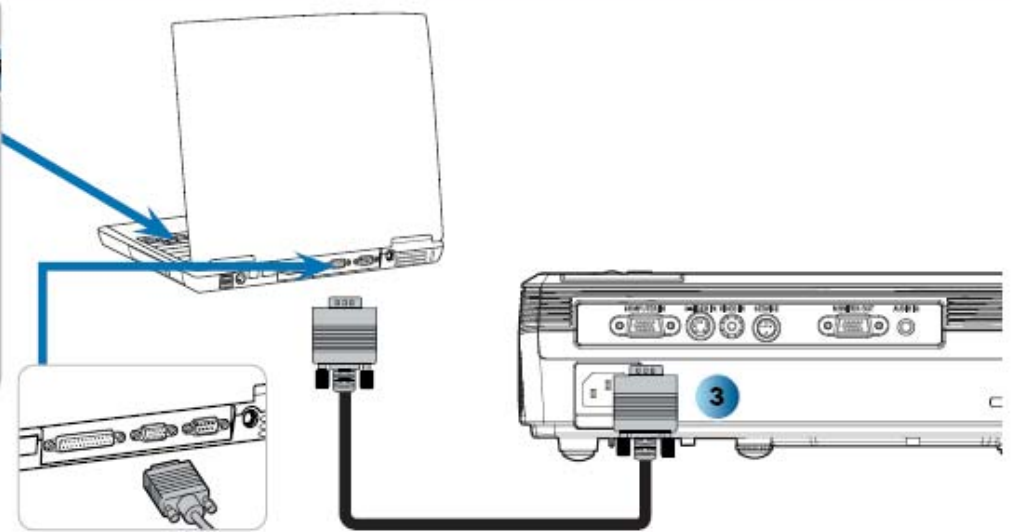
adjust zoom

Fn + **F7 CRT/LCD**

Toggle Output Settings

Compaq	[Fn] + [F4]
Dell	[Fn] + [F8]
Gateway	[Fn] + [F4]
Hewlett Packard	[Fn] + [F4]
IBM	[Fn] + [F7]
NEC	[Fn] + [F3]
Toshiba	[Fn] + [F5]

Macintosh Apple :
System Preferences⇒Display⇒
Arrangement⇒Mirror display



GENERAL SAFETY

Always supervise the use of this product

Do not attempt to access the interior of the projector

For use in dry environments only

The projector becomes warm with use – do not touch the vents during or just after use

Do not insert anything metal into your projector – screwdrivers etc

Do not place objects on top of or immediately next to the projector

Do not look into the lens when the projector is on

Use on the cable supplied

Switch off after use and allow to cool before handling (wait at least 120 seconds)

Unplug after use

The battery used in the remote control is a small part – keep away from children and anyone at risk of mouthing this

CARE & MAINTENANCE

Switch off, disconnect from power and allow to cool before carrying out any maintenance – changing lamps etc

Once this product is completely exhausted, dispose of it appropriately

When the mercury lamp needs replacing a warning message will appear – replace immediately (NP10LP)

Repeatedly switching the projector on and off can reduce lamp life

Once the projector is switched off and has cooled down, use a soft cloth that has been very slightly dampened with a mild detergent to clean the display housing. Do not use abrasive cleaning products, waxes or solvents

SPECIFICATION

Operates on a power supply of 100-240V AC 50/60Hz

Remote Control operates on a coin cell battery (CR2025) and contains a magnet which could cause interference

Weight: 2.3kg

Built-in speaker: 2W

Dimensions: 27 x 20 x 8cm approx, not including protrusions

Meets requirements of UL/CUL, TUV-GS; EMC: CB report, CE Class B

Lamp: 180W