



1. Product Name

Maxi Bubble Tube by ROMPA®

2. Product Code

19772(U) - 100cm

19773(U) - 150cm

19774(U) - 175cm

19775(U) - 200cm

(U suffix denotes 110V version)

3. Colour

White base

4. Brief Description

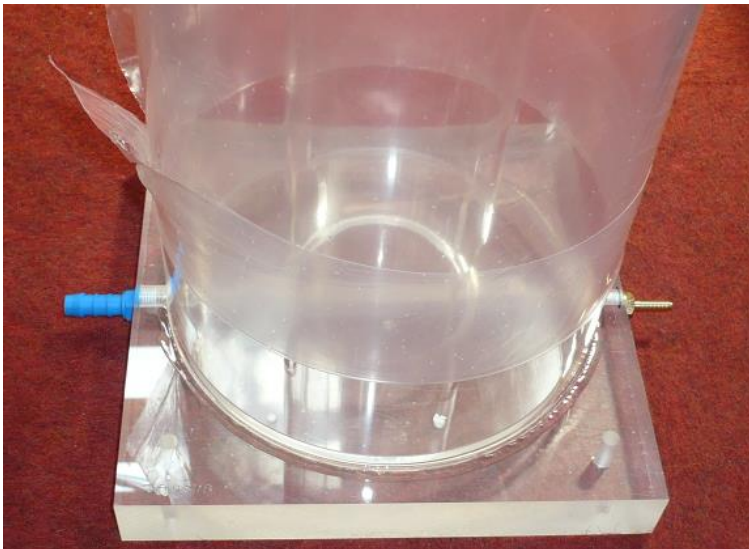
A robust, safe and multi-sensory Bubble Tube by ROMPA® that can be used non-interactively and interactively, including wirelessly. Available in 4 heights, this bubble tube has changing colours.

5. Contents

Base Unit (chassis) with Base Cover (white plastic cover):



Bubble Tube Column:



Bubble Tube Cap (shown to the right of the chassis and white cover above)

Power Supply (black box)

Drainage tube (supplied inside the chassis and shown below on top of the chassis)



Protective socket cover (supplied in the RJ45 socket of the base)

6. Snoezelen® Stimulations

- Touch
- Sight
- Sound

7. Best Use

For best effect, use in a darkened room with a collar for safety and a Wi Fi controller for wireless interactivity.

8. Compatible ROMPA® Products

14694 - Collar for Maxi Tube
20601 - Rapid Water Change Pump
20698 - BCB Fluid
21193 - Fish & Sea Creatures – Set of 8
21445 - Cubes
14896 etc - Cushioned Platform
11160 - Acrylic Mirror Panels
14053 – Light Diffraction Panels
19912 – Reflective Foil
17274 - ROMPA® Super Interactive Switch Box
19847, 21006 – 8 Colour Wirefree Controller
19939 – Wi Fi Interactive Mat Switch Set by ROMPA®
18870, 20402 - Talking Cubes by ROMPA®
21917 – Wi Fi Microphone by ROMPA®
19214 – Colour Changing Panel by ROMPA®
21728 – ROMPA® Wi Fi App Control Box
21918 - Wi Fi Override Transmitter
Sensory Magic™

Please see www.rompa.com for our extensive range of bubble tube accessories

9. Starting Up

- Place on a flat, stable floor that is capable of holding the weight of this product.
- Remove the plastic base cover from the base unit.
- Fit the bubble tube column to the base using the large screws provided. Note the location of the valves before screwing in place – orientate the column so the pipes are near to their corresponding valve. See below.
- Attach the cloudy plastic pipe to the blue valve on the Bubble Tube Column and the brown plastic pipe, which is already attached to the pump, to the metal valve at the bottom of the Bubble Tube Column.
- Check the lights are working before filling with water. Place the Bubble Tube in its final position, on a stable, level surface.
- Fill with clean water carefully until the required level is achieved (approximately 5cm from the top of the tube) and put the bubble tube cap on top of the bubble tube. We strongly recommend that you use the drainage tube and a filling pump (e.g. ROMPA®'s 20908) to fill the bubble tube from the bottom of the tube, rather than pouring water into the top of the tube to avoid water accidentally entering the chassis.
- Remove protective plastic film from the Bubble Tube column.

10. Detailed Description

A robust, safe and multi-sensory Bubble Tube by ROMPA® that can be used non-interactively and interactively, including wirelessly. Available in 4 heights, this bubble tube has changing colours.

There are essentially three options when using your bubble tube:

1. Allow your Bubble Tube to function passively – that is to say that the four colours will change in sequence.
2. Use a round 8 button controller to control bubbles and the 8 colours – red, white, purple, pink, orange, yellow, blue and green. Please see www.rompa.com for details of this – 19847.
3. Use a Wi Fi controller to remotely control the Bubble Tube, such as the Talking Cubes, 8 Colour Wirefree Controller, Wi Fi Interactive Carpet Switch Set or Colour Changing Panel, Wi Fi Microphone: When used in conjunction with Wi Fi products, the Bubble Tube will be lit in the colour chosen by the user. These controllers allow a choice of up to 8 colours to be selected.

USING THE DELUXE 8 COLOUR WIREFREE CONTROLLER (to be purchased separately)



Switch off the Bubble Tube completely. Connect the 5 Button Switch Box to the RJ45 socket in the base of the Bubble Tube (the socket to the right of the SPEED dial). The protective cover will have to be removed first and stored in a safe place so it can be replaced after use.



RJ45 socket

- To select a coloured light press one of the four buttons (red, green, yellow, blue) on the top. The selected colour will only be activated for a few seconds (the exact time depends on how you have set the SPEED and DELAY buttons) before the cycle of colours resumes. The selected colour will not remain indefinitely till another colour is selected using the switch box. Experiment with the SPEED and DELAY buttons until you find a setting that best suits your requirements. For example, set SPEED to a minimum to keep the colour change as slow as possible.
- To stop the bubbles press the central button on the top. Release the button to make the bubbles start again. On the underside of the Switch Box there is a dial labelled BUBBLES with two options – NORMALLY ON and NORMALLY OFF. Switch between these so that

one way the bubbles start if the central button is pressed and the other way the bubbles will stop if the central button is pressed.

- To adjust the speed of the light change/flash rate use the SPEED and DELAY buttons underneath labelled COLOURS.

YOU CAN ADD AN EXTERNAL SWITCH (JACK) – When a ROMPA® switch is plugged into the Jack Socket on the side of Push Button Switch Box, most other controls will be over-ridden, i.e. Push Buttons, Colours etc.



There are nine possible options when a ROMPA® switch is used. Use the dials on the underside of the 8 Colour Wirefree Controller:

1. With the left hand dial set to COLOURS and the right hand one to FLASH ON, then the Bubbles will be on all of the time and the Lights will come on when the ROMPA® switch is activated.
2. With the left hand dial set to BUBBLES and the right hand one to FLASH ON, then the Lights will be on all of the time and the Bubbles will come on when the ROMPA® switch is activated.
3. With the left hand dial set to COLOURS and the right hand one to FLASH OFF, then the Bubbles and Lights will be on all of the time and the lights will stop when the ROMPA® switch is activated.
4. With the left hand dial set to BUBBLES and the right hand one to FLASH OFF, then the Bubbles and Lights will be on all of the time and the Bubbles will stop when the ROMPA® switch is activated.
5. With the left hand dial set to COLOURS and the right hand one to HOLD, then the Bubbles will be on all of the time and the Lights will start when the ROMPA® switch is activated and will only stop when the ROMPA® switch is activated again.
6. With the left hand dial set to BUBBLES and the right hand one to HOLD, then the Lights will be on all of the time and the Bubbles will start when the ROMPA® switch is activated and will only stop when the ROMPA® switch is activated again.



7. With the left hand dial set to BOTH and the right hand one to FLASH ON, then the Bubbles and Lights will be off and they will only come on when the ROMPA® switch is activated.
8. With the left hand dial set to BOTH and the right hand one to FLASH OFF, then the Bubbles and Lights will be on all of the time and the Lights and Bubbles will stop when the ROMPA® switch is activated.
9. With the left hand dial set to BOTH and the right hand one to HOLD, then the Lights and Bubbles will be on all of the time and both will stop when the ROMPA® switch is activated and will only start when the ROMPA® switch is activated again.

11. Safety

- **Always supervise the use of this product.**
- Please check equipment immediately for any damage that may have resulted during shipping and contact ROMPA® immediately if there are any problems.
- The layout of the activity area, proper installation and maintenance of your equipment is critical; make sure the product is used in a safe and appropriate place and way.
- Do not attempt to move the Bubble Tube while filled with water.
- Please ensure that no water comes into contact with the circuit boards in the base of the Bubble Tube.
- Take extreme care when filling/emptying the Bubble Tube to ensure the electronics remain dry.
- Always disconnect the power cables when filling/emptying the Bubble Tube
- The Maxi Bubble Tube is suitable for use on a level horizontal floor. Do not attempt to move the Maxi Bubble Tube when it is full of water.
- Do not insert anything into the bubble tube base other than the power supply provided and a 17274 Interactive Switch Box.

12. Technical Specification

Base height: 11cm

Tube Diameter: 15cm

Base Diameter: 51cm

Total Product Height:

19772: 107cm

19774: 182cm

19773: 157cm

19775: 207cm

Note: please take total height into consideration if requiring a Canopy when your ceiling is low

Pump: Schego type WS3

Power Supply: 100 – 240v

Input 100 – 240V Output 15V DC 24W

(The power supply is UL listed – E1494743G58, and meets the requirements of BS EN61558-1 and BS EN61558-2-6)

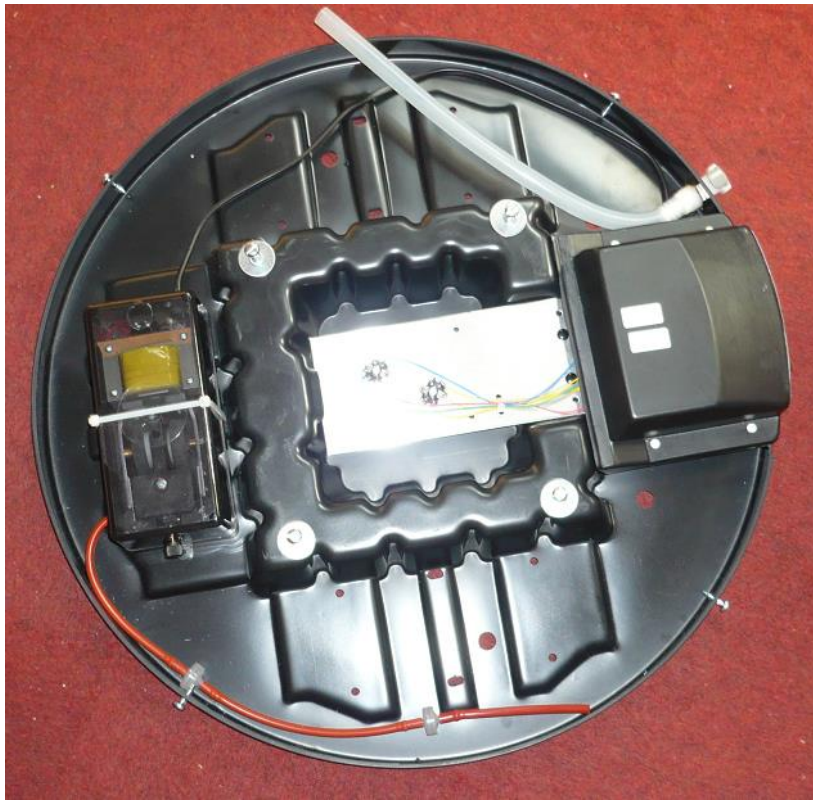
Power cable: 5.15m approximately

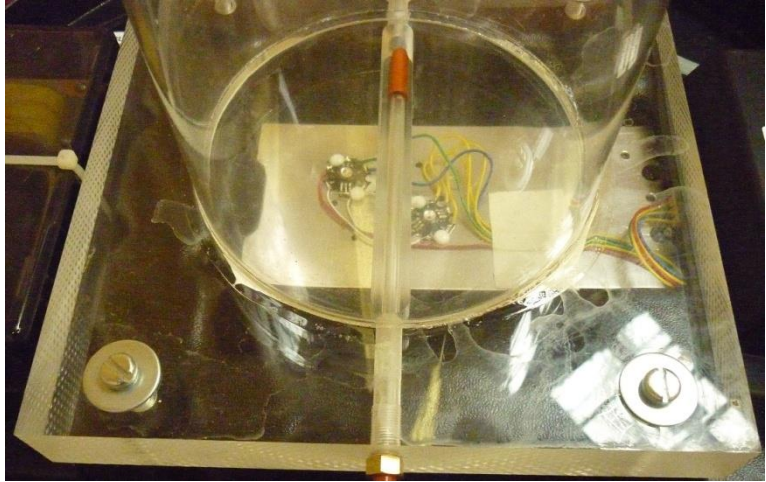
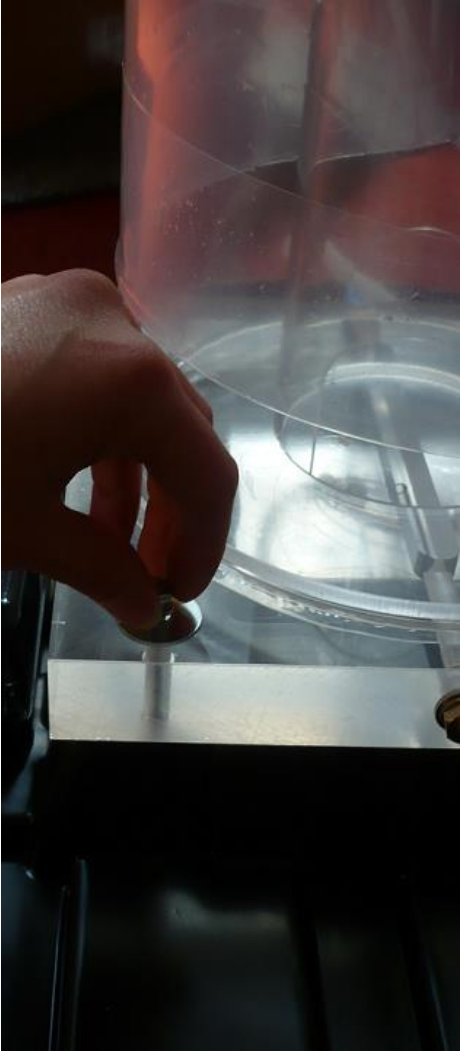
13. Installation

1. Place on a flat, stable floor that is capable of holding the weight of this product.
2. Remove the plastic base cover from the base unit. Loosen the screws around the perimeter of the base cover, but do not remove them. Slide the base cover free of the screws.



3. The bubble tube column needs to be fitted to the base unit using the four screws provided (shown below on top of silver-coloured washers). Note the location of the valves before screwing in place – orientate the column so the pipes are near to their corresponding valve. See point 5.





4. Attach the cloudy plastic pipe to the blue valve on the Bubble Tube column.



5. Attach the brown plastic pipe, which is already attached to the pump, to the brass valve at the bottom of the Bubble Tube column.



6. Replace the plastic base cover. If the Bubble Tube is to be used in a Cushioned Platform (padded base), the Base Cover (white plastic cover) may be removed and discarded.
7. Check the lights are working before filling with water. Place the Bubble Tube in its final position as it cannot be moved when full. The Bubble Tube should now be placed on a stable, level surface in preparation to be filled with water. If the surface is not flat, the pump is likely to create more noise than a gentle background 'humming'.
8. Fill with clean water carefully until the required level is achieved. This should be approximately 5cm (2 inches) from the top of the tube. The water level will rise when switched on. Approximate amount of water required: 45 litres. We strongly recommend that you use the drainage tube and a filling pump (e.g. ROMPA®'s 20908) to fill the bubble tube from the bottom of the tube, rather than pouring water into the top of the tube. Whilst the components inside the chassis have some protection against spills and splashes, the best way to avoid water accidentally entering the chassis is to fill the bubble tube using the drainage valve. Make sure that the jug or bucket you are using to draw water from is also clean. Put bubble tube cap (lid) on top of the bubble tube.

9. Remove protective plastic film from the Bubble Tube column.



10. There are two screw holes on each side of the Power Supply should you wish to wall mount the unit, or secure it to the floor. Note: please wall mount in a well ventilated area. No fixings are supplied as these depend on the surface the unit will be attached to. The Power Supply box weighs 1.3kg.

Please note: image (right) shows a 110V – 240V plug – the plug supplied will be appropriate to the country of the customer

11. Plug the Power Supply into the POWER IN 15V DC socket of the bubble tube using the jack plug supplied.



12. Plug the other end of the Power Supply in at the wall.

13. The green LED light will be lit. The unit will begin to flash, displaying a sequence of coloured lights, and bubbles will begin to rise up the tube. Turn the wheel labelled 'SPEED' on the white Base Cover to adjust the speed of the light change.



You may wish to use a collar to secure your bubble tube to the wall. The collar 14694 is appropriate for these bubble tubes. We recommend the use of a collar to prevent the bubble tube from being pulled over. Attach your Collar to the wall, to secure the top of the bubble tube.



14. Care and Maintenance

- Regularly change the water and use a suitable water cleansing agent (e.g. BCB Fluid)
- The environment the Bubble Tube is in will affect how often the water needs to be changed. Bubble tubes in dark, damp environments with minimal ventilation will need changing at a different frequency to those in bright, well-ventilated rooms. Changing the water monthly is a good starting guideline. Plan for holidays. For example, if the bubble tube will be switched off for long periods, empty the water out. You do not want to return from a long holiday to find the water is green and unpleasant!
- If the tube is used in an area where lime-scale in water is a problem, it may be advisable to use an appropriate water softener
- Failure to cleanse your bubble tube water and/or use an appropriate water softener can block the valves of the bubble tube and so encourage product failure.
- Do not add bleach, coloured dyes or salt to the water
- Once this product is eventually exhausted, please dispose of it appropriately and responsibly.

TO EMPTY THE MAXI BUBBLE TUBE

- Use the drainage tube provided (see below).



Connect this tube to the white socket on the bubble tube base, next to the POWER IN socket. Push the end with the black stripe into the white socket till you hear a click to indicate that it is secure. Make sure the other end with the tap is in a suitable container to take the water. Turn the tap to release the water.

ALWAYS CLOSE THE TAP AFTER EMPTYING THE BUBBLE TUBE.

REMOVE THE DRAINAGE TUBE AND KEEP IT IN A SAFE PLACE

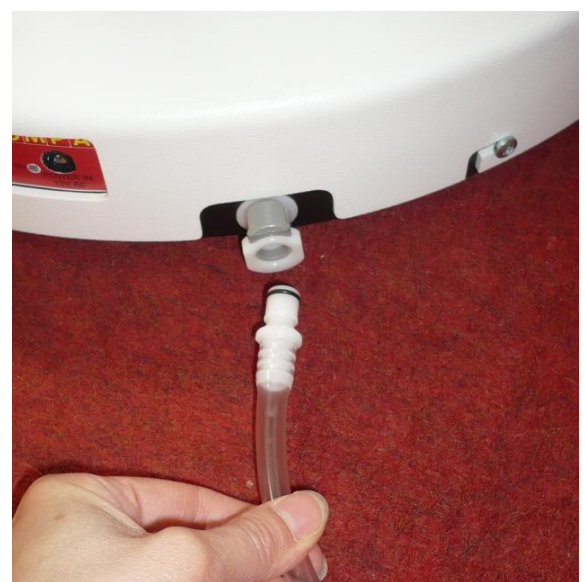


To
the

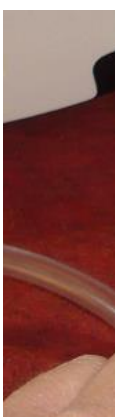
remove

drainage tube, push on the grey button to release the tube. Removing the drainage tube automatically seals the cloudy pipe of the bubble tube. Empty any water that has remained in the drainage tube. Keep a piece of paper towel to hand to place under the white socket to catch the small amount of water that can be released.

Disconnecting the drainage tube:



Connecting the drainage tube to the filling pump tube (to be purchased separately):



Connecting the filling pump to the bubble tube power supply:



Before using the tap on the drainage tube, make sure you are aware how turning the tap opens and closes the tube:

OPEN:



When the tap is closed, you will not be able to see down the tube.

- Alternatively, use an appropriate pump. Remove the cap (round lid at the top of the tube) and remove the water from the top of the tube using your pump. A pump is available separately from ROMPA®: code 20601. This pump can also be used to fill your bubble tube.

GENERAL CARE

- Wash the exterior of the Maxi Bubble Tube with a slightly soapy cloth. Wipe excess soap away with a damp cloth. **NOTE:** Never use solvent based cleaning products, methylated spirits, alcohol wipes or liquid detergents to clean the Maxi Bubble Tube.

When you need to switch the bubble tube OFF after use, or before maintenance (e.g. before changing the water) please note that:

- There is no ON/OFF switch on the bubble tube itself, or on the power supply shown below.

- Power should be disconnected by removing the mains plug from the wall socket. Do not disconnect the jack plug of the power supply from the round POWER IN 12V AC socket at the base of the bubble tube. Repeatedly disconnecting the jack plug from this round socket is likely to lead to damage to the bubble tube, and should also be avoided for safety reasons.



15. Troubleshooting

In the unlikely event of product failure, please check the following:

Problem: No lights, no bubbles

- Check that the bubble tube is plugged in at the wall
- Check that the power supply is connected
- Check the green LED light is on

Problem: Lights but no bubbles

- Try switching the bubble tube off and then again
- Check all pipes are firmly connected and free of kinks/bends. Check the pipes have not worked free – occasionally vibrations/transportation can loosen pipes
- Have you connected a Deluxe 8 Colour Wirefree Controller (19847) to make your Bubble Tube interactive? Is the 8 Button Deluxe Controller firmly connected? Turn the Switch Box over – is it set to ‘Bubbles On’? If it is not, set it to this

Problem: Super Interactive Switch Box does not work

- Is the Switch Box firmly connected? Turn the Switch Box over – is it set to ‘Bubbles On’? If it is not, set it to this
- If this suggestion does not work, it is possible that the pump has failed. Contact ROMPA® for advice

Problem: The bubble tube is very noisy

- Make sure that the bubble tube is on a completely flat and stable surface, and not on a slope or uneven surface
- Make sure that the pump is still securely attached inside the chassis and that it has not worked free of the supports that hold it down

Problem: The bubble tube is leaking

- Fill and drain the bubble tube using the drainage tube and the valve with the grey button on the chassis – water can be accidentally spilled when filling the tube via the top.
- Make sure that all the tubing inside the bubble tube base is securely attached
- Place paper towels in the chassis to identify exactly where the leak is coming from. Contact us for advice once the exact location of the leak has been found.

Problem: There is debris inside the bubble tube

- Use the cap as a lid for the bubble tube column to stop dust, lint etc. falling into the tube
- Make sure no beads from the polystyrene packaging have fallen into the tube
- Keep the water clean by organising a regular cleaning schedule to avoid the growth of algae. Use BCB Fluid to keep the water clean.

Further copies of these instructions can be downloaded at www.rompa.com

We hope you find our instructions invaluable. If you have any suggestions for improving them further your comments will be greatly received – please contact us at

producthelp@rompa.com