

## **1. Product Name**

LED Waterless Rainbow Tube

## **2. Product Code**

21476, 21510, 21511

## **3. Colour**

Colours change and effects can be chosen according to need.

## **4. Brief Description**

A sound responsive light effect tube with changing light patterns.

## 5. Contents

This product is supplied in two boxes, containing:

- 1 x base



- 1 x tube



- 1 x power adapter
- 4 x washers
- 4 x wing nuts

## 6. Snoezelen® Stimulations

- Visual

## 7. Best Use

Use floor mounted, indoors in a darkened environment.

## **8. Compatible ROMPA® Products**

Many multisensory items can be used as passive or interactively. Please refer to our catalogue or website [www.rompa.com](http://www.rompa.com) for a great selection of items that provide a huge variety of physical, cognitive, olfactory, tactile and visual input.

Compatible with the ROMPA® Wi Fi range:

- 20848, 21098 – Sensory Magic®
- 21918 – Wi Fi Override Transmitter
- 21728 – ROMPA® Wi Fi App Control Box
- 18870 – Talking Cube by ROMPA®
- 20402 – Mini Talking Cube by ROMPA®
- 19847 – Super Switch – Deluxe 8 Colour Wirefree Controller
- 21006 – 8 Colour Wirefree Controller
- 19939 – Wi Fi Interactive Carpet Mat Switch Set by ROMPA®
- 19214 – Colour Changing Panel
- 21917 – ROMPA® Wi Fi Microphone
- 14694 – Collar
- 11201 – Cushioned Platform
- 11160 – Acrylic Mirror Panel
- 14053 – Light Diffraction Panels

## **9. Starting Up**

- Unpack
- Decide how you wish to use the tube – for calming or to stimulate responses
- Select appropriate light display

## **10. Detailed Description**

Perfect for customers who love bubble tubes but need a water-free alternative! Ideal for environments where infection control is of paramount importance. With multiple light effects and 3 sound responsive functions. Some effects are calming whilst others are stimulating. Compatible with the ROMPA® Wi Fi range.

## 11. Safety

### **ALWAYS SUPERVISE THE USE OF THIS PRODUCT**

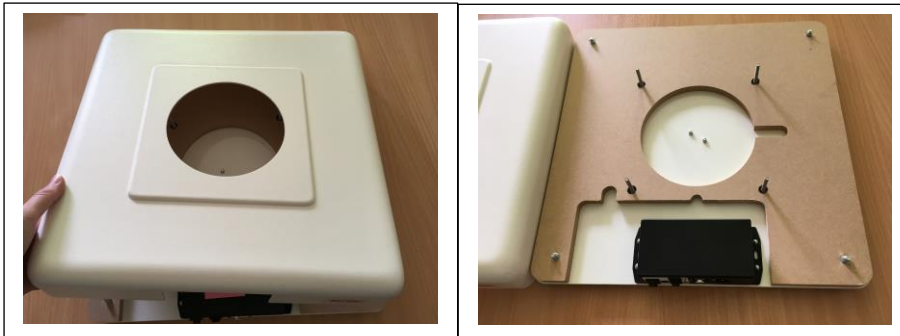
- Only use the 5V DC power supply supplied with this LED Waterless Rainbow Tube. Do not connect any other power supply as this may damage the light tube.
- Use indoors, in dry environments.
- This product is not a toy. Ensure that it is supervised at all times.
- The LED Waterless Rainbow Tube should not be lifted up by the user or bumped into with force, as this could damage the product or cause injury.
- Remove all packaging and either store this in a safe place out of reach of clients or dispose of this responsibly. Plastic bags and wrapping can be hazardous to children and vulnerable people.
- Keep away from sources of heat and fire.

## 12. Technical Specification

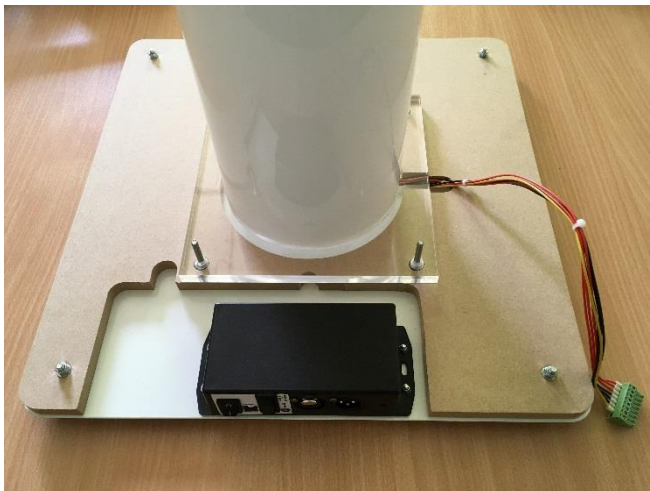
Base Size:	40cm x 40cm x 6.9cm
Tube Diameter:	15cm
Material:	Acrylic tube
Weight (unpacked weight):	8.3Kg (1.25M), 8.7Kg (1.45M), 9.6Kg (1.8M)
Weight (packed weight):	10.7Kg (1.25M), 11.2Kg (1.45M), 12.1Kg (1.8M)
Heights	145cmH, 180cmH, 125cmH
Packed Dimensions:	43cm x 43cm x 14.8cm (1.25M) 43cm x 43cm x 14.8cm (1.45M) 43cm x 43cm x 18.3cm (1.8M)
Power supply:	UL, CUL and CE approved
Input	100-240VAC 50-60Hz
Output:	5VDC 6A (30W)

### 13. Installation

- Remove all packaging
- Check the product to ensure that it hasn't been damaged in transit. In the unlikely event that any problems are found, contact ROMPA® immediately
- To assemble the LED Waterless Rainbow Tube, first remove the plastic white cover off the base by gently lifting up at all four corners:



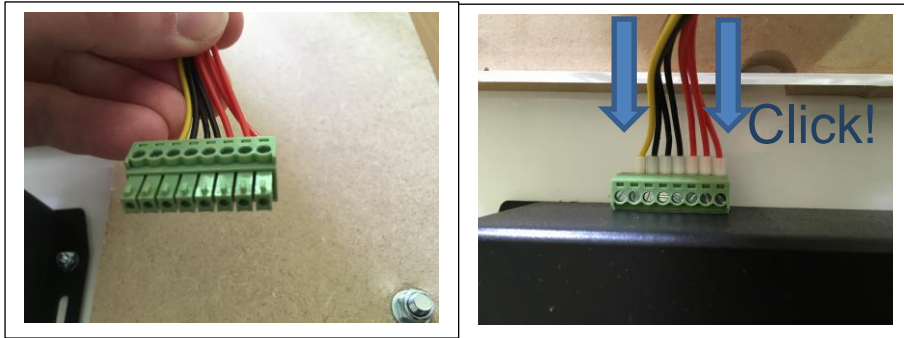
- Gently lift up the tube and place over the base, lining up the 4 screws on the base with the four drilled holes on the square base:



- Secure the tube to the base using the washers and wing nuts provided. Put a washer on each screw first, followed by a wing nut. Twist the wing nuts to tighten:



- Connect up the electric cable to the rear of the black control box:



- Put the white plastic cover back over the tube to cover the base. Press down to secure the base in position.
- Plug the power adapter into the AC socket.



- Plug the LED Waterless Rainbow Tube into the mains and switch mains power on.
- Turn the LED Waterless Rainbow Tube on using the on/off switch on the base.
- Do not put any liquids, including water inside the tube.

#### Modes:

- The LED Waterless Rainbow Tube has 15 modes which can be selected using the black MODE button at the rear of the tube base. The mode will change once with each press of the switch, running through modes 1 to 16, then back to mode 1 again.



- MODE 1 White bubbles, red background – travelling upwards
- MODE 2 White bubbles, green background – travelling upwards
- MODE 3 White bubbles, blue background – travelling upwards
- MODE 4 White bubbles, grey background – travelling upwards

- MODE 5 Vertical rainbow
- MODE 6 Blue/white vertical stripe
- MODE 7 Red/white vertical stripe
- MODE 8 Lollipop – rainbow travelling upwards
- MODE 9 Colour fade – gradual fade through a rainbow of colour
- MODE 10 Candy cane – diagonal red/white stripe
- MODE 11 Pink/green diagonal stripe
- MODE 12 Blue/green diagonal stripe
- MODE 13 Sound responsive\* – responds according to sound/music volume – green column changing to blue in reaction to sound volume.
- MODE 14 Sound responsive\* – colour changes with sounds made – steps through a rainbow of colours with each individual sound made.
- MODE 15 Sound responsive\* – “quiet time” mode – column pattern stops if noise level is too high – sensitivity is adjustable. Rainbow pattern travelling upwards which stops when too much noise is made. Ideal for encouraging “quiet time”.
- MODE 16 Automatic Cycle – The LED Waterless Rainbow Tube automatically cycles through Modes 1-14. The time interval between modes can be set using the SPEED button. There are 5 options: 2 secs\*, 30 secs, 3 mins, 10 mins, and 30 mins. Press the SPEED button once to change to the next time interval setting.

*\*NB: The 2 second time interval is included to allow the user to easily determine the current time interval setting. For example: Simply change the time interval to 2 seconds and then press the SPEED button 4 times to reach the 30 minute time interval. The 2 second time interval is not intended for use other than for demonstration purposes only.*

The LED Waterless Rainbow Tube will turn on with the time interval as set in last usage. The LED Waterless Rainbow Tube will turn on in the mode in which it was last used.

#### **To adjust the sound sensitivity:**

In all three sound responsive modes, sensitivity to sound can be adjusted using the black switch at the rear of the Light Column base. This switch is labelled SENS/SPEED as it is used to adjust both the sound sensitivity (when a sound-responsive mode is used) and the speed (when used in other modes). Press the switch upwards once to change the sensitivity to the next setting. The LED Waterless Rainbow Tube has 5 sound sensitivity settings. Upon each press of the switch, the sound sensitivity will run through levels 1 to 5, and then back to 1 again.

#### **To reset sound sensitivity to factory settings:**

- Press and hold down the SENS/SPEED switch at the rear of the Light Column base.
- The background noise level will then be sampled. Whilst this is happening, the Column will flash in the colour red.
- When the sampling is complete, the Column will turn green.
- The SENS/SPEED switch can then be released. Press the switch once more to resume to the mode selected.

#### **Pattern Speed:**

The speed of the colour-changing patterns can be adjusted using the SENS/SPEED button at the rear of the Light Column base. Press the switch upwards once to change the speed to

the next setting. The Light Column has 5 speed settings. Upon each press of the switch, the sound sensitivity will run through levels 1 to 5, and then back to 1 again. The LED Waterless Rainbow Tube will turn on with the speed as set in last usage.

**Jack Socket:**

There is a jack socket at the rear of the LED Waterless Rainbow Tube base should you wish to add your own simple switch. Use of such a switch allows the user to change the MODE with each button press.

**DMX:**

The mode can also be changed using a DMX Controller (not included). The channel numbers are as follows:

- CH1 Red
- CH2 Green
- CH3 Blue
- CH4 Mode

## **14. Care and Maintenance**

- All parts of the LED Waterless Rainbow Tube should be checked regularly
- Store in a safe place out of direct sunlight when not in use.
- Store out of reach of clients – do not allow unsupervised use.
- Wipe off accidental marks/liquids using a damp cloth, avoiding excessive amounts of water.
- Do not use cleaners with abrasives in them or solvent-based cleaners such as trichloroethane or carbon tetrachloride. Washing up liquid solutions used to wash cups/plates etc. are ideal.

## **15. Troubleshooting**

*Not applicable*

Further copies of these instructions can be downloaded at [www.rompa.com](http://www.rompa.com)

We hope you find our instructions invaluable. If you have any suggestions for improving them further your comments will be greatly received – please contact us at

[producthelp@rompa.com](mailto:producthelp@rompa.com)