



1. Product Name

Airgo® Active Seat Cushion

2. Product Code

21969

3. Colour

Colours may vary

4. Brief Description

Whilst seated, this cushion encourages small subtle movements to keep the spine moving.

5. Contents

- 1 x Airgo® Active Seat Cushion, already inflated
- 1 x pump

6. Snoezelen® Stimulations

Touch

7. Best Use

Use on a seat, such as a chair, aeroplane seat or car seat.

8. Compatible ROMPA® Products

21968 - Airgo® Active Back Cushion (as shown)



9. Starting Up

- Adjust the inflation.
- Place on a suitable seat.

10. Detailed Description

Whilst seated, this cushion encourages small subtle movements to keep the spine moving. Shaped so as to take the load off the pelvis. Also useful for those with ASD in stressful situations such as a visit to the dentist. Portable – take it with you to guarantee a comfortable seat. Compact enough to take on flights or use in the car. Weight: 820g. Maximum weight supported: 200kg. Colours may vary.

11. Safety

Always supervise the use of this product

On receipt, remove and dispose of all packaging responsibly.
Use this product on a stable, indoor and dry seat.

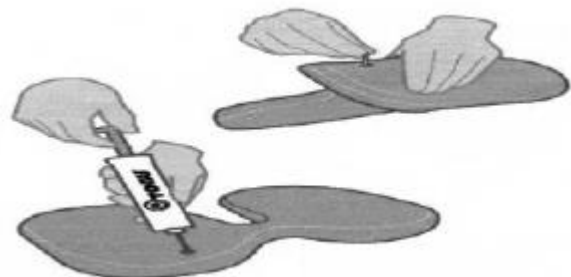
This product is not a toy – it is intended for use under the supervision of trained professionals.

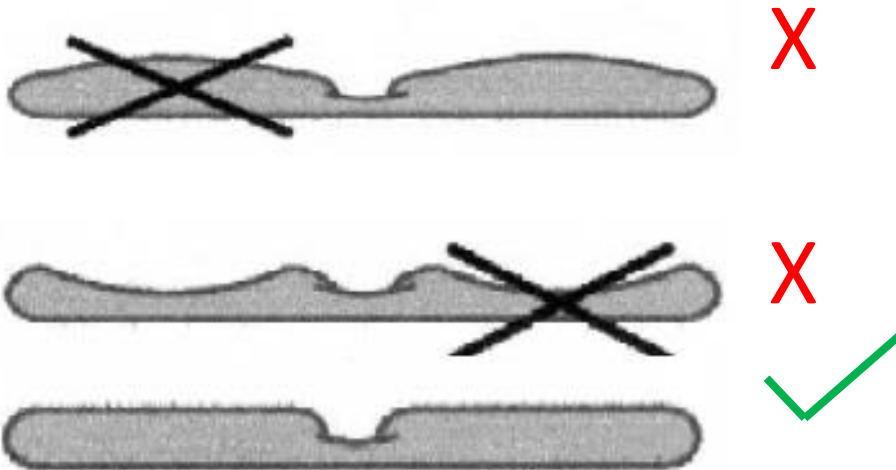
12. Technical Specification

Size: 40 x 28cm
Maximum weight supported: 200kg
Materials: Free from phthalates and heavy metals

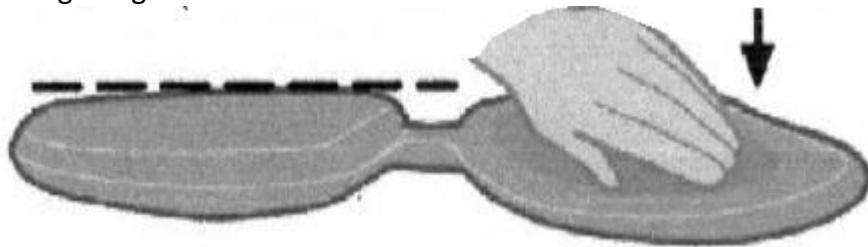
13. Installation

1. Adjust the inflation using the needle valve in the cushion and the included pump. Fold the cushion to access the valve. Make sure that the product is at room temperature before making any adjustments. The pump needle is in the pump handle. Always moisten the needle before inserting the needle into the valve. Insert the slightly moistened needle tip into the valve. To inflate, pump in air. To deflate the cushion, pinch the valve gently (the pump is not required to deflate). Only use the pump supplied and its needle attachment with this product. When inflating, pump in air, taking care not to over-inflate the cushion – the cushion should be flat, not arched.

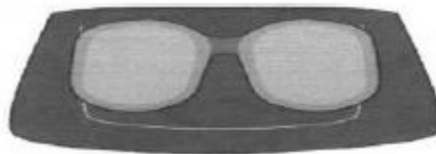




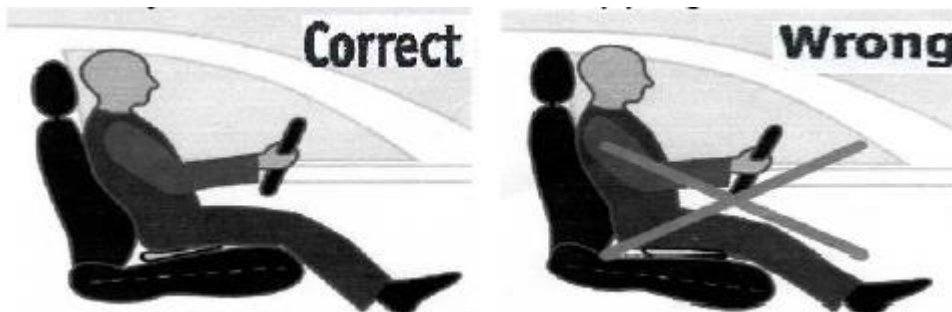
2. To check that the cushion is correctly inflated, press with your hand on one half of the cushion. The inflation level is correct when the other half remains flat i.e. does not bulge or go slack.



3. Place the cushion on your seat. Tip your seat slightly backwards. The cushion should be about 5cm away from the back of the seat.



4. Make sure your knees are slightly above your backside when you are seated. Avoid tipping the seat surface towards the front.



5. The Airgo® Active Seat Cushion assumes body temperature after only a few minutes. You may notice a 'new' smell from a recently purchased cushion – this will soon dissipate.



14. Care and Maintenance

- Regularly check the product for signs of wear and tear e.g. before each use. Replace the product if it is damaged.
- Store and use away from direct sunlight and away from sources of heat.
- Avoid contact with sharp or pointed objects.
- This product is not intended to be thrown – handle this product with care.
- Use a mild cleaning product that is suitable for plastics.

15. Troubleshooting

Not applicable

Further copies of these instructions can be downloaded at www.rompa.com

We hope you find our instructions invaluable. If you have any suggestions for improving them further your comments will be greatly received – please contact us at producthelp@rompa.com