



1. Product Name

Simple Music Player

2. Product Code

22112, 22113

3. Colour

Available in green, red and walnut

4. Brief Description

Helps provide people with Dementia with music in a way they can independently access themselves.

5. Contents

- 1 x Simple Music Player

6. Snorzelen[®] Stimulations

- Audible

7. Best Use

Use indoors.

8. Compatible ROMPA® Products

ROMPA® and WINSLOW® Resources provide a range of equipment and resources both for people who have difficulties with fine motor control, reminiscence, audible activity and also specifically designed resources for those who have Dementia.

9. Starting Up

To operate, there are just three controls:

- Start playing music - *lift the lid*
- Skip this song - *(optional) press the big button*
- Stop the music - *close the lid*

The music will always continue from where it was last stopped

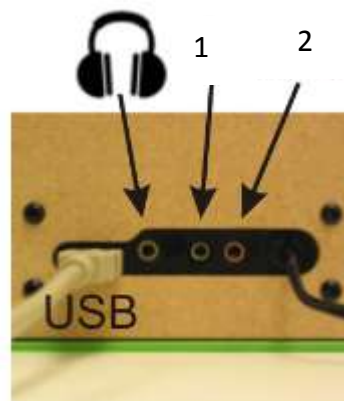
The player has been designed with the minimum of controls and has been extensively tested and trialled.

On the back panel there are additional facilities for particular personal requirements.

Headphones:

If these are required, then the green socket accepts a stereo jack-plug. (Note: headphones can be extremely loud and cause hearing damage). There is a headphone socket provided in the rear of the unit. Plugging in headphones immediately cuts out the main speaker. The socket is the light green one, the same as on your computer.

Switches



For those with dexterity problems the 'ON/OFF' control and 'NEXT TUNE' buttons can be over-riden by means of remote switches plugged into the two available sockets. The Simple Music Player will accommodate a switch with a 3.5mm adapter.

To operate the player with a switch using the 'ON/OFF' facility, insert the switch adapter into position "1". When the switch is pressed, the player will be switched on or off.

The 'NEXT TRACK' controls can also be operated using a switch. Insert the switch adapter into socket position "2". When the switch is operated, the Simple Music Player will change to the next track. The Flap must be lifted to enable this function.

10. Detailed Description

Music has a restorative effect which improves quality of life and mental well-being. Many individuals with Dementia want to listen to music but are unable to use conventional music players because they find these too complicated to operate. Many people with early stage Dementia find controls difficult to remember or manipulate.

This version is designed to overcome these problems as it helps to provide people with Dementia with music they remember in a way they can independently access themselves. Operated by lifting the lid, which automatically switches the unit on and plays a tune. If a new tune is desired, a single large button allows the individual to skip to the next track. Family, carers or friends set the volume (which is intentionally not easy to change by accident), as well as downloading tunes onto the player (easily via a USB link from a Windows, Apple or Linux PC).

11. Safety



Please read all the Safety information below before each use

ALWAYS SUPERVISE THE USE OF THIS PRODUCT

- Use indoors, in dry environments.
- Keep cables safely out of reach.
- Remove all packaging and either store this in a safe place out of reach of clients or dispose of this responsibly. Plastic bags and wrapping can be hazardous to children and vulnerable people.
- Do not place near sources of heat or fire that may damage the surface (radiators, fires, underfloor heating, hot central heating pipes etc.)

12. Technical Specification

- Dimensions: *300mm x 190mm x 110mm*
- Weight: *1.7kg*
- Colour: *Available in Red, Green, and Burr-Walnut effect*
- Memory capacity: *4GB minimum (about 1500 - 2000 songs)*
- Music upload: *via USB connection (cable provided) compatible with Microsoft Windows, Apple ios and Linux*
- Music format: *MP3, MPEG4, WMA, WAV, AAC files (Note: not M4P files)*
- User controls: *ON/OFF and NEXT TRACK*
- Presentable controls: *Volume control on the base of device*
- Ancillary controls: *User controls can be mimicked using remote switches via the back panel*
- Headphone socket: *Yes*
- Power requirements: *Local mains supply - factory configured to your country's standard*
- Power consumption: *less than 700mA at 9V*
- Amplifier: *6W Class D mono audio amplifier*
- Speaker: *4ohm 90mm diameter high-quality circular cone*
- Cleaning: *Wipe down with a damp cloth (not waterproof)*
- Country of Origin: *Made in Wales, United Kingdom*

13. Installation

Setting up is intended to be undertaken by friends, family, or carers. There are two essential operations:

Setting the volume and uploading the playlist.

The volume control is designed to avoid being accidentally changed by the user. This could lead to the music being far too loud and disturbing, or too quiet so it may appear to be 'broken' if hard of hearing or confused.

To adjust the volume, using a pencil or similar, press and hold one of the buttons underneath the player.



Don't press too hard; you should feel a gentle click like on a keyboard or doorbell. Only after holding the control for 5 seconds the volume will begin to increase or decrease, so it can be set to the appropriate level.

Uploading Music (via USB)

Tunes are loaded into the 'Simple Music Player (SMP)' by means of a USB cable connection to your computer. There is no software to install. It is compatible with all systems which support USB 'plug and play' devices (Apple, Microsoft, Linux, etc.)

Important: if you choose to reformat the player at any time you must choose an MSDOS-FAT or FAT32 format option, not an Apple iOS format or exFAT.

Once the Simple Music Player is recognised by the computer then it operates like a standard USB stick or external memory device. Copy your music files from the computer to the Player via 'cut and paste' or 'drag and drop'. Music can be individually uploaded or deleted at any time using this method.

Memory

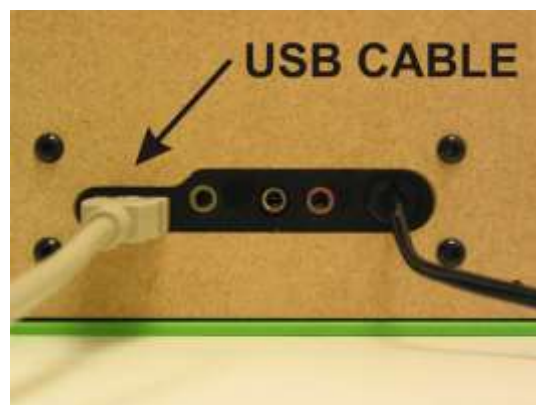
The internal memory is set at a minimum of 4GB or 'far more than you probably need'.

Obviously the length of individual songs, and the file format has an influence on the capacity but typically this can be 1500 - 2000 songs (over three days' worth of continual play, which then loops back to the beginning). It has been found that most people are more than happy with a much smaller song list of say 25 to 40 familiar tunes.

Attaching a USB player

Make sure your Simple Music Player has no mains power or else this process will not work. The lid can be open or closed; it will have no effect on the upload process.

Insert the USB cable in its socket at the back of the Simple Music Player



Connect the other end of your USB cable to a convenient USB port on your computer.

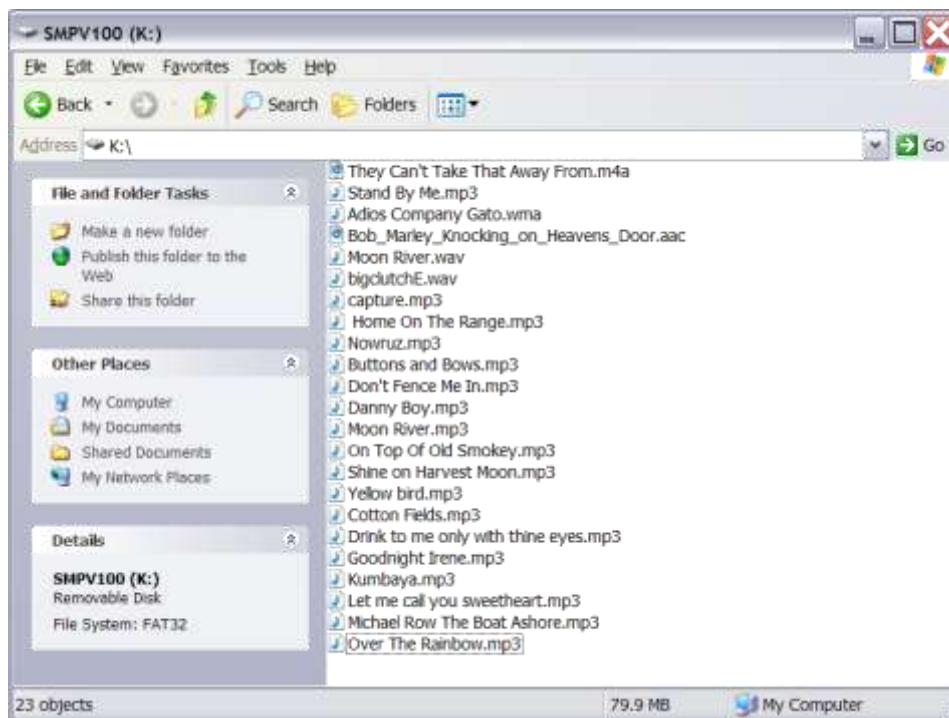
Transferring Files

At this point only turn the SMP power on.

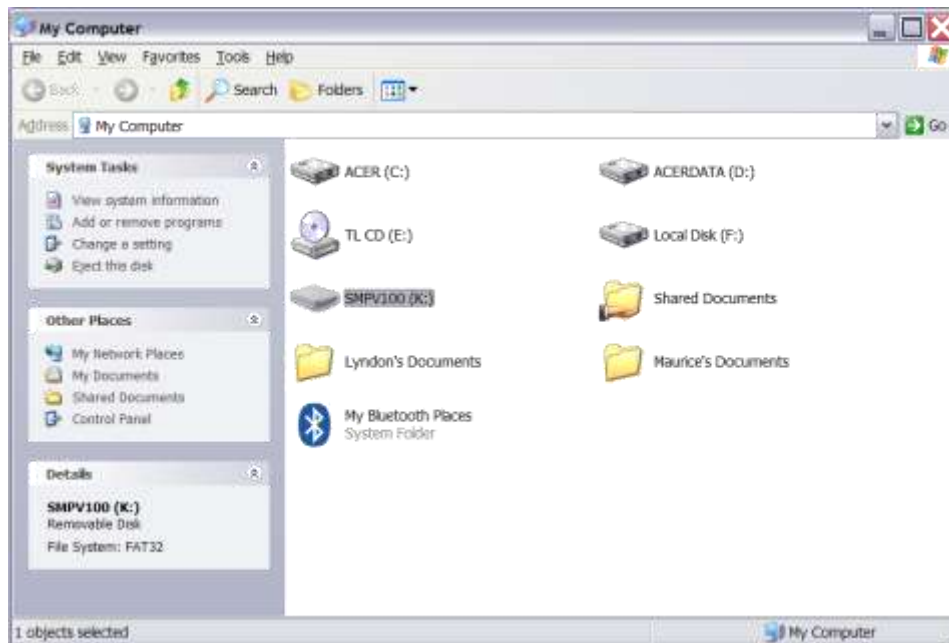
Depending upon your particular computer you may get a pop-up message such as:



Clicking on 'Open Folder to view files' will open the memory area ready for transferring your files by your preferred means. Notice the device (or folder) is called "SMPV100"



Alternatively, if you did not get a pop-up message, search for the Simple Music Player in 'My Computer' or your 'Devices Folder'. Just look for "SMPV100" and double click on it to open the file transfer window.



Turn the SMP power off and back on before playing the tunes as a standalone player.

Uploading from Apple devices?

The Simple Music Player can handle the .m4a file format directly from iTunes (Please note that it is not an Apple device so it cannot play 'Apple protected' .m4p downloads).

Reformatting

The Simple Music Player acts exactly the same as if it's a USB stick or flash drive plugged into your machine, so formatting is just the same operation. **MAKE SURE YOU REFORMAT USING MSDOS-FAT FORMAT.** This is NOT an Apple iOS device so iOS formatting will not work.

14. Care and Maintenance

- For indoor use only.
- Always supervise the use of resources.
- Do not place near sources of heat or fire that may damage the surface (radiators, fires, etc.)

15. Troubleshooting

I plug my USB cable in but my computer doesn't recognise it as a device

Turn the power off to the music player before you plug the USB cable in. Then plug in your computer and only after you've made this physical connection, switch the power back on. The Music Player decides at power up if it is just a player, or its a USB device, so just plugging the cable in does nothing.

I haven't got files in MP3 format. What do I do?

MP3 is a generic term for this type of player; the Simple Music Player can handle several popular file formats listed below:

- .mp3 "MP3 format sound"
- .m4a "MPEG4 Audio"
- .wma "Windows Media Audio"
- .aac "ADTS Audio"
- .wav "WAVE sound"

There are many free file converters which can be downloaded from the internet, which convert your music into MP3 format. Don't be too concerned about which version of MP3 file you have, the 'Simple Music Player' handles them all. However, for best results convert you files into mono and choose a higher bit rate (greater than 125kHz). Below is a short list of third party providers (we have no responsibility for their operation)

- [Koyotesoft](#)
- [Online-convert.com](#)
- [DVDVideoSoft](#)
- [NCH Switch MP3](#)

When I use remote switches it stops when I press switch but starts when I release is again?

You have the main lid open. To use external or remote switches you need the lid to be in the down position.

I've reformatted my Simple Music Player and now it doesn't play

If you are sure that your files are the correct file type (MP3, M4A, etc.) then it is most likely that the wrong formatting convention has been used. This simply means that the music player can't read its memory, even if your computer can. What you can't do its affect the way the Simple Music Player works by uploading tunes or reformatting; it has its own unique memory which you have no access to, and is physically separate. Consequently if it worked before you reformatted, then it should work again.

Microsoft Windows users

Power down the player. Plug in your USB cable to the player and computer. Switch the power on and you will get a device found message such as: Or it will simply appear in your device list. Either way, you should be able to see a device which appears as

SMPV100 (unless you've changed the name) regardless of how it was formatted. What we now need to do is reformat it with a compatible system. So point to the device and right click. Then select 'Format' from the drop down list. Click, and you will get a pop-up box like this: Now select the correct 'File System' from the drop-down list which has to be FAT32. If you select 'NTFS' or 'exFAT' it will not work. You can change the name of the Player by typing a new one in the box marked 'Volume Label' if you wish, or just leave it alone. Then press start and the format process will complete. Once done, simply 'drag and drop' or 'cut and paste' your selected files across to the player. Power down the player. Remove the USB cable to the player and computer. Switch the power on and your tunes should play.

Apple iOS MAC users

Power down the player. Plug in your USB cable to the player and computer. Then switch the power on. (You may see a new device called SMPV100 appear on your desktop – you don't need to do anything with it) You now have to launch the 'Disk Utility' which you will find in the 'Utilities' section of 'Applications'. When this opens you will see a list of drives on the left. Choose SMPV100 and then click on the 'Erase' option from the action buttons. This gives you access to formatting the Music Player, but you must use the correct format. 'Disk Utility' automatically chooses 'OS X Extended' – this will not work, as the music player is not an Apple manufactured device. You need to click on 'Formatting Options'. Select 'MS-DOS (FAT)'. Please note: 'ExFAT' or 'OS X' will not work. You can change the name of the drive if you wish from SMPV100 – it won't affect anything. Finally, click on 'Erase'. Once complete you can copy your files to the SMPV100 device. Power down the player. Remove the USB cable to the player and computer. Switch the power on and your tunes should play.

Apple users:

Deleting existing files

The Simple Music Player looks and plays all the compatible files it finds on its internal memory regardless of which directory or folder they are in.

Apple iOS doesn't actually delete files when you press the 'delete' key, but creates a hidden sub-folder called '.trash' or '.trash-1000' and simply moves them into that folder. Whilst you can't see the files, they still exist and so the music player will find them and play them.

There are two choices:

- 1) empty the .trash folder. There is information how to do this here www.thexlab.com/fags/trash.html#Anchor-Force-11481 for example.
- 2) (***** Preferred *****) reformat the Simple Music Player memory card (this will delete everything on the Simple Music Player) and then drag and drop the music you want back onto it again.

(PLEASE MAKE SURE YOU ONLY POWER UP THE MUSIC PLAYER ONCE THE USB CABLE IS PLUGGED IN, OR ELSE IT WON'T OPERATE IN USB MODE)

An interruption occurred during an upload. What do I do?

If you have suffered a power cut, computer crash, or some other communication failure during an upload then the last track downloaded has probably been corrupted. Turn the Music Player off and on again, re-establish connection and delete the last track on the list.

Further copies of these instructions can be downloaded at www.rompa.com

We hope you find our instructions invaluable. If you have any suggestions for improving them further your comments will be greatly received – please contact us at

producthelp@rompa.com