

### MOLUK GmbH

Seefeldstrasse 178, 8008 Zurich, Switzerland

#### The following merchandise was submitted & identified by the applicant as:

<u>Sample description and function:</u>	Plastic ball with slit
<u>Packaging/Type:</u>	Yes/ display rack, carton, hang tag
<u>Instructions for use/assembly</u>	Not provided
<u>Product identification name:</u>	Mox (display, 3-set)
<u>Style/Item No:</u>	43350<US.:0058>, 43360<US.:0059)
<u>Manufacturer/Vendor:</u>	MOLUK GmbH
<u>Country of Origin:</u>	MADE IN CHINA
<u>Labeled Age Grading:</u>	0+
<u>Requested Age Grading:</u>	0+
<u>Age Group Assessed As Per Age</u>	< 36 months
<u>Guideline:</u>	
<u>Age Group Applied in Testing:</u>	All age
<u>Sample receiving Date:</u>	2015/05/05
<u>Testing Period:</u>	2015/05/06 – 05/13

#### We have tested the submitted sample(s) as requested and the following results were obtained:

<u>Test Requested</u>	<u>Result</u>
- EN 71 Part 1:2014 – Mechanical and Physical Properties	<u>Pass</u>
Labeling requirement (Washing/Cleaning Label, CE mark, importer / manufacturer mark (name, address), product identification) according to the Directive 2009/48/EC-Safety of toys	<u>See Result on page 2, 3</u>
- EN 71 Part 2:2011+A1:2014 – Flammability	<u>Pass</u>
- EN 71 Part 3:2013+A1:2014- Migration of Certain Elements	<u>Pass</u>

Signed for and on behalf of  
SGS Taiwan Ltd.

  
Iris Huang  
Asst. Manager



### Test Results:

European Standard – Safety of Toys: EN 71 Part 1:2014 – Mechanical and Physical Properties

Clause	Description	Result
4	General requirements	
4.1	Material cleanliness	<u>Pass</u>
4.7	Edges	<u>Pass</u>
4.8	Points and metallic wires	<u>Pass</u>
4.20	Acoustics	<u>Pass</u>
4.22	Small balls	<u>Pass</u>
5	Toys intended for children under 36 months	
5.1	General requirements	
5.1a	Small part requirement on toys & removable Components (Test method 8.2)	<u>Pass</u>
5.1b	Torque test (Test method 8.3)	<u>Pass</u>
	Tension test (Test method 8.4)	<u>Pass</u>
	Drop test (Test method 8.5)	<u>Pass</u>
	Impact test (Test method 8.7)	<u>Pass</u>
	Compression test (Test method 8.8)	<u>Pass</u>
	Sharp edge (Test method 8.11)	<u>Pass</u>
	Sharp point (Test method 8.12)	<u>Pass</u>
5.10	Small balls	<u>Pass</u>

**Labeling requirement (Washing/Cleaning Label, CE mark, importer / manufacturer mark (name, address), product identification) according to the Directive 2009/48/EC-Safety of toys**

Summary table:

	On product	On packaging
Washing/Cleaning instruction	Absent	Absent
CE mark	Absent	Present
Name & Address	Absent	Present
Product ID	Absent	Present

**Washing/Cleaning Label** Absent / See Remark  
 (Sub-content is extracted from the context of EN 71 Part 1:2014)

(Remark: According to Directive 2009/48/EC the following safety requirements apply regarding cleaning and washing: A toy intended for use by children under 36 months must be designed and manufactured in such a way that it can be cleaned. A textile toy must, to this end, be washable, except if it contains a mechanism that may be damaged if soak washed. The toy must fulfill the safety requirements also after having been cleaned in accordance with this point and the manufacturer's instructions. The manufacturer should, if applicable, provide instructions on how the toy has to be cleaned.)

CE mark, importer / manufacturer mark (name, address), product identification      Present / See Remark  
 (Sub-content is extracted from the context of EN 71 Part 1:2014)

(Remark: Toys made available on the market must bear the CE marking. The CE marking must be subject to the general principles set out in Article 30 of Regulation (EC) No 765/2008. The CE marking must be affixed visibly, legibly and indelibly to the toy, to an affixed label or to the *packaging*. In the case of small toys and toys consisting of small parts, the CE marking may alternatively be affixed to a label or an accompanying leaflet. Where, in the case of toys sold in counter displays, that is not technically possible, and on condition that the counter display was originally used as *packaging* for the toy, the CE marking may be affixed to the counter display. Where the CE marking is not visible from outside the *packaging*, if any, it shall as a minimum be affixed to the *packaging*. Where specific legislation does not impose specific dimensions, the CE marking must be at least 5 mm high.

The manufacturer's name, registered trade name or registered trade mark and the address at which the manufacturer can be contacted must be indicated on the toy or, where that is not possible, on its *packaging* or in a document accompanying the toy. This requirement applies also to the name and address etc. of any importer.

Manufacturers must ensure that their toys bear a type, batch, serial or model number or other element allowing their identification, or where the size or nature of the toy does not allow it, that the required information is provided on the *packaging* or in a document accompanying the toy.)

Observation Result:

CE marking were found on the display rack, hang tag and the height are 8 mm

Manufacturer's/importer name, address were found on the display rack, hang tag

Product identification 43350, 0059 were found on the display rack, hang tag and carton

European Standard - Safety of Toys : EN 71 Part 2:2011+A1:2014 – Flammability

Clause	Description	Result
4	Requirements	
4.1	General requirements	<u>Pass</u>

N.B.: -Only applicable clauses were shown

European Standard - Safety of Toys: EN 71 Part 3: 2013+A1:2014 - Migration of Certain Element Pass

### Category III: Scrapped-off toy material

Method: With reference to EN 71 Part 3:2013+A1:2014. Analysis was performed by ICP-AES.

Extractable Organic Tin was analyzed by GC-MS. Extractable Chromium III & Chromium VI were analyzed by LC-ICP-MS.

Test Item		Result(mg/kg)	MDL	Limit
		1	(mg/kg)	(mg/kg)
Soluble Aluminium	(Al)	N.D.	50	70,000
Soluble Antimony	(Sb)	N.D.	10	560
Soluble Arsenic	(As)	N.D.	10	47
Soluble Barium	(Ba)	N.D.	50	18,750
Soluble Boron	(B)	N.D.	50	15,000
Soluble Cadmium	(Cd)	N.D.	5	17
Soluble Cobalt	(Co)	N.D.	10	130
Soluble Copper	(Cu)	N.D.	50	7,700
Soluble Lead	(Pb)	N.D.	10	160
Soluble Manganese	(Mn)	N.D.	50	15,000
Soluble Mercury	(Hg)	N.D.	10	94
Soluble Nickel	(Ni)	N.D.	10	930
Soluble Selenium	(Se)	N.D.	10	460
Soluble Strontium	(Sr)	N.D.	50	56,000
Soluble Tin	(Sn)	N.D.	4.9	180,000
Soluble Zinc	(Zn)	N.D.	50	46,000
Soluble Chromium (III)	(Cr (III))	N.D.	1	460
Soluble Chromium (VI)	(Cr (VI))	N.D.	0.18	0.2
Soluble Organic Tin <sup>#</sup>	--	N.D.	--	12

Remark: #

Test Item		Soluble Organic Tin Result(s)	MDL
		1	(mg/kg)
Methyl tin	(MeT)	N.D.	0.5
Di-n-propyl tin	(DProT)	N.D.	0.5
Butyl tin	(BuT)	N.D.	0.5
Dibutyl tin	(DBT)	N.D.	0.5
Tributyl tin	(TBT)	N.D.	0.5
n-Octyl tin	(MOT)	N.D.	0.5
Tetrabutyl tin	(TeBT)	N.D.	0.5
Di-n-octyl tin	(DOT)	N.D.	0.5
Diphenyl tin	(DPhT)	N.D.	0.5
Triphenyl tin	(TPhT)	N.D.	0.5


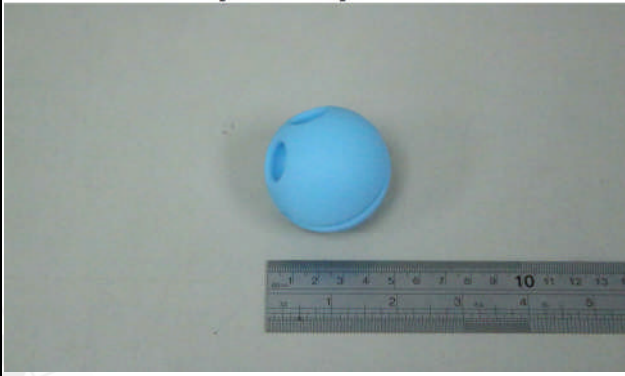

This document is issued by the Company subject to its General Conditions of Service printed overleaf, available on request or accessible at <http://www.sgs.com/en/Terms-and-Conditions.aspx> and, for electronic format documents, subject to Terms and Conditions for Electronic Documents at <http://www.sgs.com/en/Terms-and-Conditions/Terms-e-Document.aspx>. Attention is drawn to the limitation of liability, indemnification and jurisdiction issues defined therein. Any holder of this document is advised that information contained herein reflects the Company's findings at the time of its intervention only and within the limits of client's instruction, if any. The Company's sole responsibility is to its Client and this document does not exonerate parties to a transaction from exercising all their rights and obligations under the transaction documents. This document cannot be reproduced, except in full, without prior written approval of the Company. Any unauthorized alteration, forgery or falsification of the content or appearance of this document is unlawful and offenders may be prosecuted to the fullest extent of the law. Unless otherwise stated the results shown in this test report refer only to the sample(s) tested.

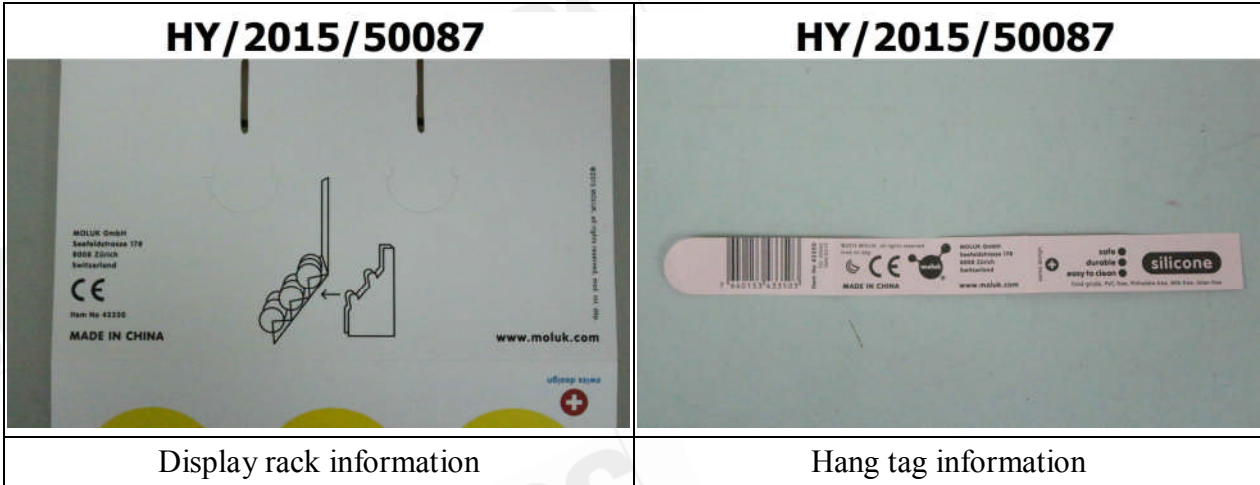
Description:

1. Blue soft plastic of sample.

NOTE:

1. mg/kg = ppm
2. N.D. = Not Detected
3. MDL =Method Detection Limit
4. "--" =Not Conducted
5. The chemical analysis was conducted in SGS Taiwan Ltd. Chemical Laboratory-Taipei

Sample picture	
<p><b>HY/2015/50087</b></p> 	<p><b>HY/2015/50087</b></p> 
<p>As received</p>	<p>Front view</p>
<p><b>HY/2015/50087</b></p> 	<p><b>HY/2015/50087</b></p> 
Carton information	



SGS authenticate the photo on original report only

\*\* End of Report \*\*